

User Guide Wienerberger

Revit 2019



building
product design

passivent



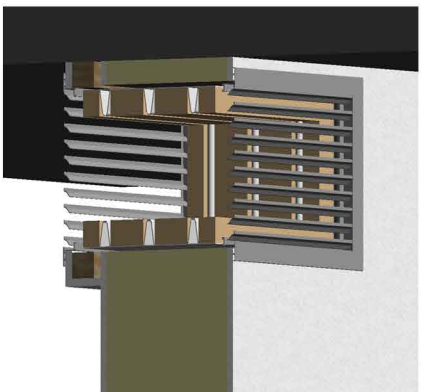
Passivent SoundScoop components

Passivent SoundScoop components have been created as Revit ‘Face Based’ Families containing manufacturer specific information and render materials.

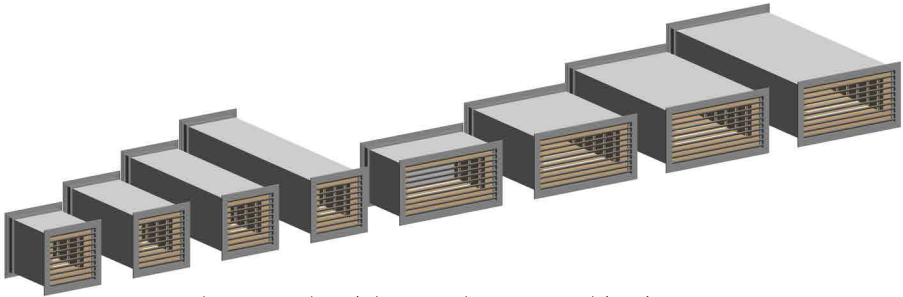
This user guide has been included to provide guidance on how to correctly use and make the most of the content.



SoundScoop placed on a project file
320 x 320mm and 620 x 320mm



Section
620(w) x 320(h) x 300(l) mm

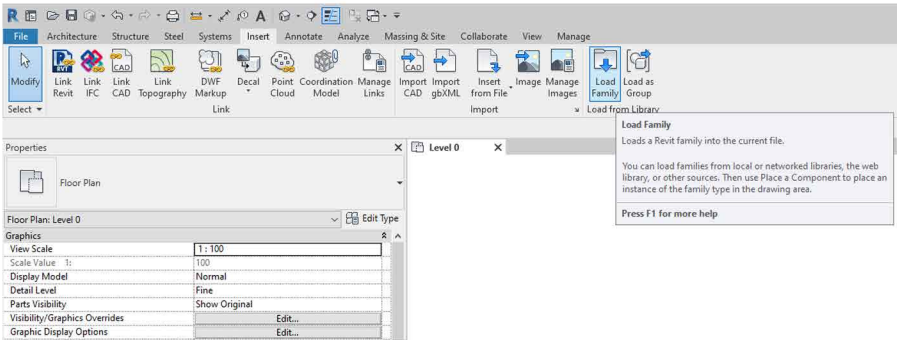


Above are the eight SoundScoop combinations
of two cross-sections and four lengths that are available

Loading the component(s) into your project

You can load the chosen component into your project using the following method.

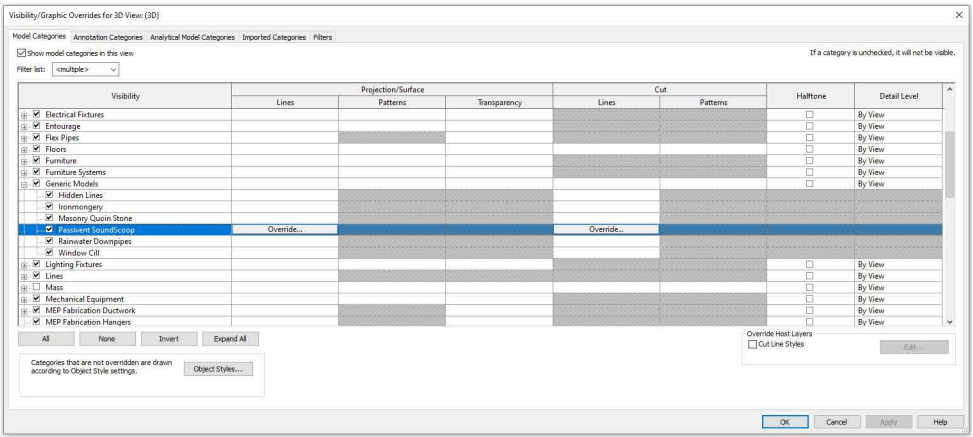
- 1. Open the Revit file containing your 'project' (.rvt) and navigate to an appropriate view.
- 2. Go to the ‘Insert’ tab on the Revit Ribbon and select ‘Load Family’.



3. Navigate to the location of the saved the lintel component that you have just downloaded and select the file.

4. The family is now embedded into your project and ready to be placed. They can be selected by selecting 'Component' in the 'Architecture' tab and choosing the family from the 'Type Selector' drop down in the 'Properties Box' (or by selecting 'Components' in the 'Systems' tab).

5. Should you need to control the visibility or the graphic display of these components in any view of your project, go to the 'View tab - Visibility/Graphics - Model Categories', uncheck the 'Passivent SoundScoop' item under the 'Generic Models' category and click OK.



Manufacturer Specific Data

The components contain technical and manufacturer specific data to assist the user when creating their project and/or when scheduling the components.

To access the data embedded into the components, including COBie data, simply select the component and click the 'Edit Type' button at the head of the 'Properties' tab.

Other Notes

These components are for design intent only and the data contained within should be treated as such. Please contact the manufacturer for more details and product literature.

You can add this component to your company template file, they will then be available without loading when starting a new project.

Revision

Version 1.0 – First Issue



building
product design

passivent